



Capability Statement

Housing Partners International LLC

Uses

- **Housing**
- **Condominiums**
- **Storage Tanks**
- **Cooling Towers**
- **Barrier & Retaining Walls**
- **Haz Mat Storage**
- **Parking Structures**
- **Commercial Centers**
- **Hotels**
- **Warehouses**
- **Manufacturing Facilities**
- **Artificial Reefs**

Build Better, Build Faster, and Build For Less

- High quality pre-cast concrete structures
- Low weight & less materials = lower costs
- Shorter construction time
- Better project and job site control
- Withstands severe earthquakes, super typhoons, and humid environments
- Safe, durable, attractive, energy efficient buildings that appreciate in value
- Lowest insurance costs

Patents

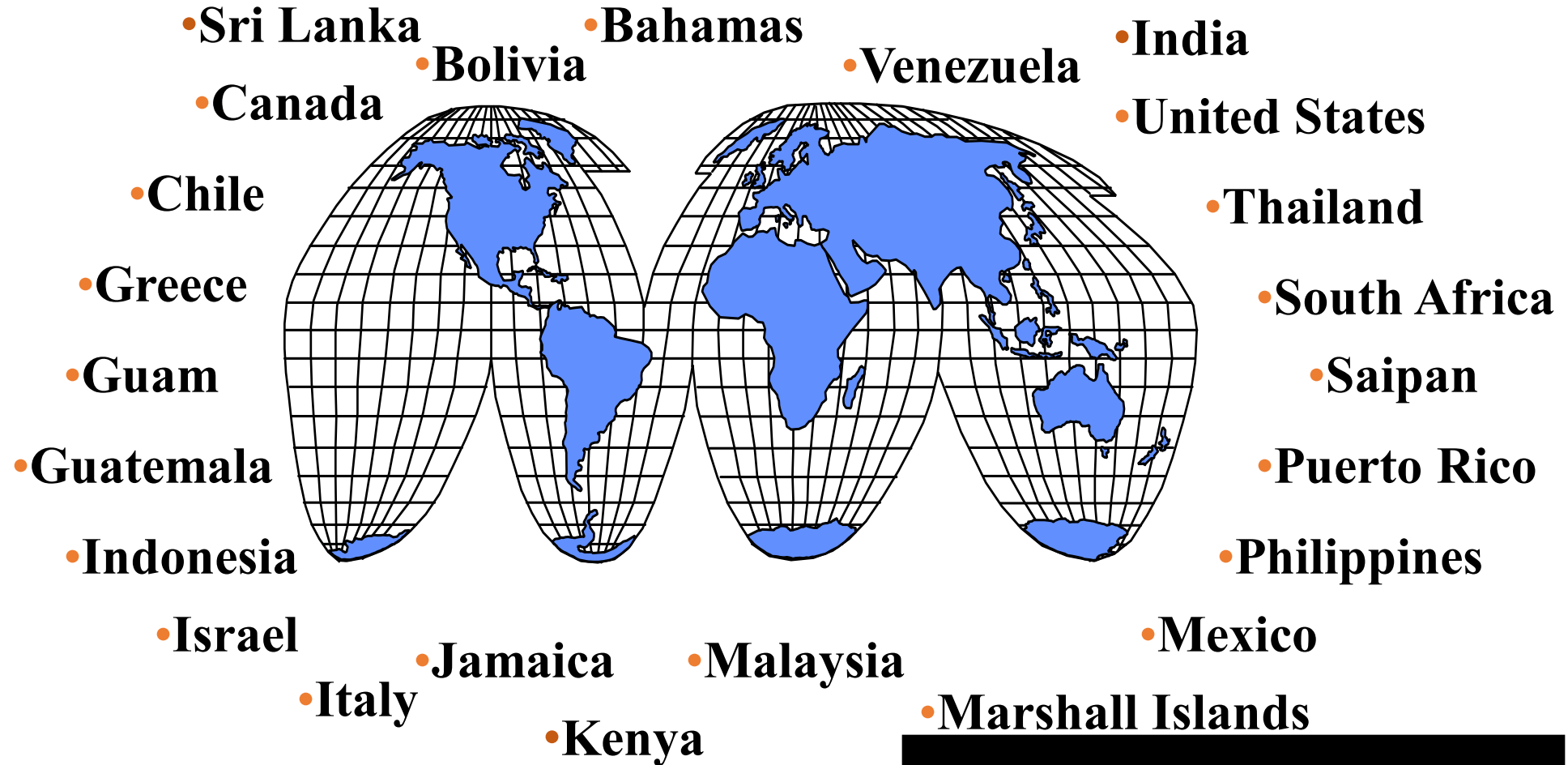
&

Trademarks

- **Argentina**
- **Australia**
- **Bangladesh**
- **Brazil**
- **Canada**
- **China**
- **Ecuador**
- **India**
- **Indonesia**
- **Japan**
- **Korea**
- **Malaysia**
- **Philippines**
- **Thailand**
- **South Africa**
- **U.S.**

- **Argentina**
- **Australia**
- **Brazil**
- **Canada**
- **China**
- **Indonesia**
- **Japan**
- **Korea**
- **Malaysia**
- **Mexico**
- **Philippines**
- **Thailand**
- **South Africa**
- **U.S.**

WAFFLE-CRETE[®] is used all over the World



Testing Documentation

- **ICBO Certification**
- **Complies with ACI 318**
- **Strength / Seismic Testing**
- **Indonesian Load Testing**
- **Floor Panel Load Test**
- **Sound Transmission Loss**
- **Heat Transfer (R Value)**
- **Fire Endurance**

Casting Process

DE-MOLD



**Daily cycle: pour, finish & cure,
and de-mold**



FINISH & CURE



POUR

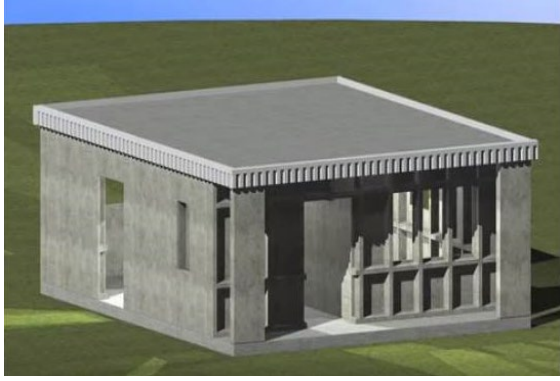
Casting - Vibrating Screed



Molds and Curing covers . . .

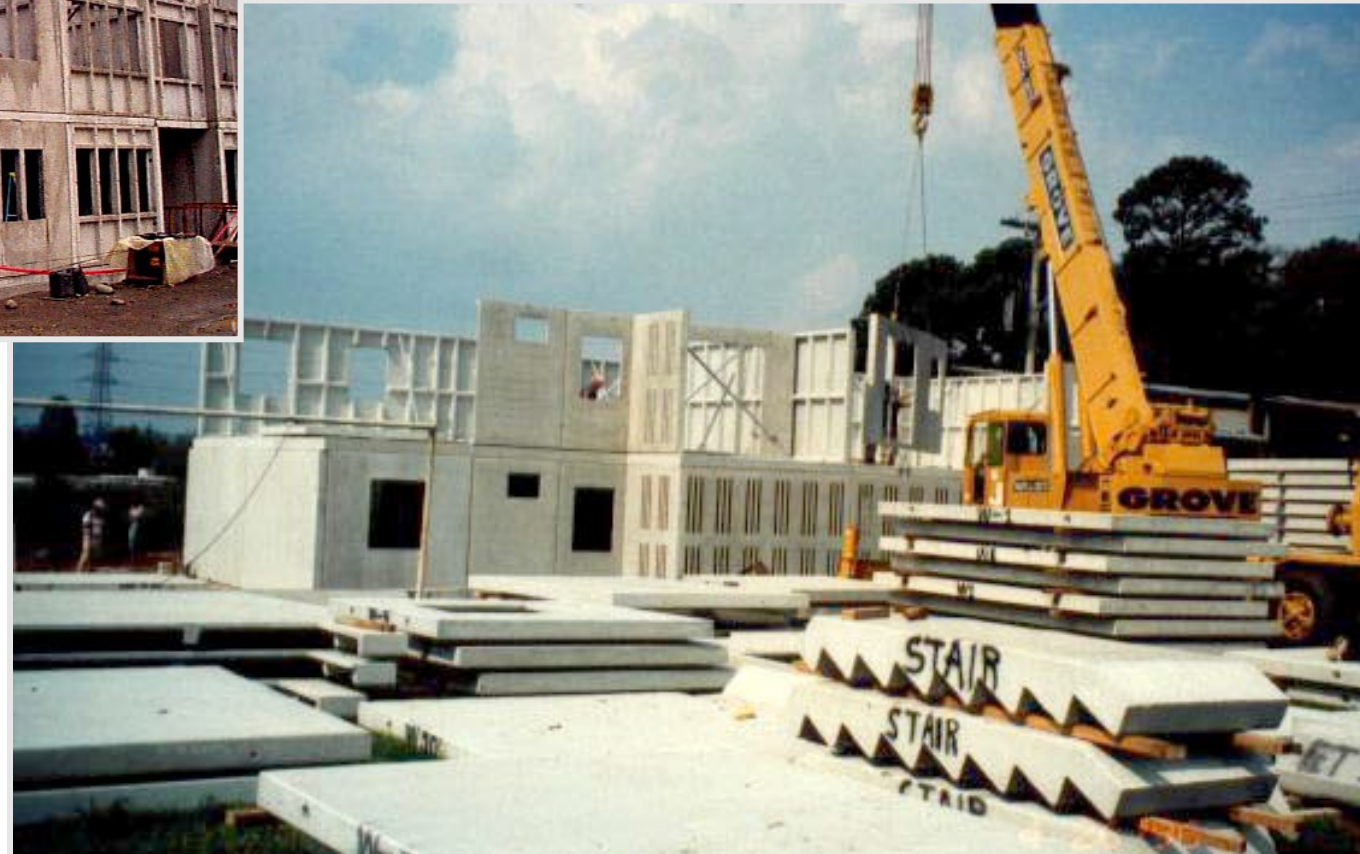
- Are insulated to trap heat & moisture for overnight curing
- Cut curing to 15 hours - molds can be reused every day
- Precise, consistent, smooth pre-cast surface does not require plastering or patching
- Ready to apply any finish







Erection Process Today





Local
Van Doren Home





Trinidad Finished Construction







Briarwood Apts. Showcase New System



Jamaica - Model Home



Local - Coronado Estates





Marshall Isles - Outrigger Resort



Local - Hadley Campus



MRI Addition



Local - Virginia Miller Animal Shelter



California - Commercial Buildings



Radius Corners



Louisiana - Borders Book Store



Canada - Parker Place



California - Medical Center



Washington D.C. - Hampton Inn





Get Started.

Contact us for more information.

Stephanie Hughes

Managing Member

Housing Partners International LLC

4359 Hobbs Drive

Las Vegas, NV 89120

1.702.575.3996

stephanie.hughes@hpi.dev

www.hpi.dev

David P. Hanlon

Managing Member

Housing Partners International LLC

4359 Hobbs Drive

Las Vegas, NV 89120

1.702.528.6363

david.hanlon@hpi.dev

www.hpi.dev